

# GEAR



GO BEYOND

No. 18



LAND ROVER GEAR IS DESIGNED FOR THE ADVENTUROUS.  
AUTHENTIC PRODUCTS FOR MODERN LIVING. GO BEYOND





**K2 Back Pack**  
LRO 1925

56cm x 30cm x 15cm,  
weight 1800g

In a joint venture with Boblbee this exclusive Land Rover back pack offers sleek good looks with extraordinary practicality. The hard shell is an ABS Plastic monocoque for impact protection and the AERO harness is made in a new lycra mesh laminate to reduce heat build-up against the wearer's back.

It will accommodate a lap top and the interior comes complete with an organiser and accessory pockets.

The K2 Back Pack meets IATA luggage regulations and can be used as cabin baggage. One unique aspect is that it has been granted CE EN 1621-2 Certified Back Protector. The harness incorporates a mobile phone pocket.

**Pathfinder Chronograph**  
LRO 2214

40 mm case

This black multi function Chronograph is vacuum-plated on a stainless steel case. It has a quartz movement, super luminous dial and is designed for water sports including diving to 200mts.





**Business Briefcase**

LRO 2243 – Steel

L48cm x W13cm x H32cm

If you are on the move for business or leisure this is the bag for you. It is a very light weight fabric construction shoulder bag or briefcase with a protective compartment for a laptop. With a myriad of pockets for pens, cards, phone and papers there is a place for everything.



**Travel Alarm**

LRO 1870

Compact travel alarm in its own protective case.



**Business Wallet**

LRO 2156 – Brown

approx. 10cm x 8.5cm when folded

Ultra slim leather wallet with credit card section.



**City Wallet**

LRO 2155 – Black

approx. 10cm x 12.5cm when folded

Leather wallet with credit card, bill fold and travel pass sections plus coin purse.



**Travel Journal**

LRO 2263 – Burnt Orange

Keep your memories alive by completing a travel journal on your next trip. Within the protective cover is a bespoke travel journal that allows and prompts you to record every day of your trip. This is a perfect gift for any traveller.



**Pen**

LRO 1733

Roller ball pen with twist action cap.





**Alberta Sunglasses**  
LRO 2048 – Black  
Sports sunglasses with polarised lens and carry case.



**Oakland Sunglasses**  
LRO 2047 – Tortoise Shell  
Sports sunglasses with polarised lens and carry case.



**Bison Retainer**  
LRO 1872  
Sunglasses or spectacle frame retainer that floats on water. Designed for all water sports and fishing activities.



**Hudson Eyewear Clips**  
LRO 1873  
The perfect gadget to secure your driving glasses in the car. It fits to your sun visor and allows easy storage of all glasses when not in use.



**Harvard Shirt**

SRT 2094 – Sky, Blue

S M L XL XXL

Our Oxford shirts return but now with an extremely effective wrinkle free treatment. Made from 100% Cotton they are a practical and comfortable solution to all your business and casual needs.



THE RANGE ROVER COLLECTION





EMBOSSSED WITH THE EXCLUSIVE RANGE ROVER NAME THIS SELECTION OF TRAVEL LUGGAGE IS HAND CRAFTED IN ENGLAND AND MADE FROM THE FINEST FULL GRAIN LEATHERS. THESE BAGS WILL IMPROVE WITH AGE AND BECOME AN INDISPENSABLE PART OF YOUR TRAVEL PLANS.



**Strata Business**  
LRO 1843  
42cm x 28cm x 15cm

**Strata I Weekender**  
LRO 1814  
58cm x 30cm x 25cm



**Strata II Weekender**  
LRO 1815  
65cm x 33cm x 28cm





**Calgary Watch**  
LRO 1910

45mm bezel  
This is our most advanced sports watch using contemporary design which blends a titanium case and a stunning carbon fibre dial. It benefits from a 10 year battery, a fully adjustable natural rubber bracelet, a scratch resistant sapphire crystal and is dependable to 20 ATM waterproof rating.



**Range Rover Key Ring**  
LRO 1781

Range Rover key ring designed to partner the Range Rover key fob.



**Hemingway Pen**  
LRO 2405

The Range Rover Hemingway Pen is a fine writing instrument that will delight any owner. The replaceable ink cartridge has a stainless steel tip and tungsten carbide ball.



**Range Rover Umbrella**  
LRO 2281

Canopy 130cm  
Contemporary black and white design exclusively for Range Rover.



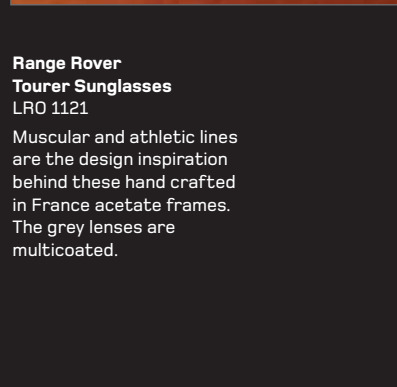


**Range Rover  
Supercharged Sunglasses**  
LRO 1102

Injected frame charged with carbon with removable titanium front, and beta titanium bridge for lightness. These come with two sets of lenses that are interchangeable.

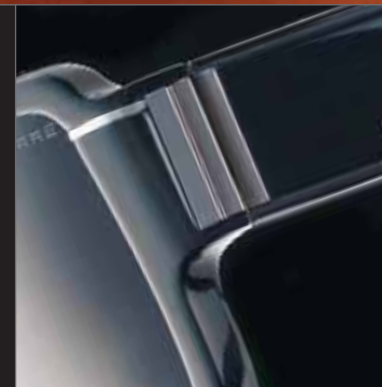


**Sport Cap**  
HTS 1916 - Black  
One Size  
Contemporary Range Rover  
Sport design.



**Range Rover  
Tourer Sunglasses**  
LRO 1121

Muscular and athletic lines are the design inspiration behind these hand crafted in France acetate frames. The grey lenses are multicoated.





**Alberta Duffle Bag**  
LRO 2084

76cm

A mid sized heavy duty kit bag with welded seams and waterproof fabric. It has adjustable cargo straps across the top and a heavy duty shoulder strap plus integral D-rings on each side for tie down clips.

**Alberta Duffle Bag**  
LRO 2085

90cm

The Big Brother in our waterproof bag section ideal for the longest trips.



**Alberta Dry Bag**  
LRO 2088

40L

This dry sack can be used on kayaking or sailing trips due to its waterproof fastening.





**Alberta Wash Bag**  
LRO 2092

This soft pack wash bag folds up for travel or hangs up using an integral hook for easy use.

**Alberta Travel Trunk**  
LRO 2087

Outer bag size:  
60cm x 40cm x 38cm

All the staff who have used this bag simply call it 'The Trunk'. This is a very versatile large bag with three inner bags which can be removed for separate use. Each bag can be assigned to a family member for clothing or marked up by removable tabs for specific equipment. It is a perfect solution for a tidy vehicle and can sit in the load space all year round.



**Alberta Back Pack**  
LRO 2089  
39L

Multi compartment rucksack with comfort fit harness, MP3 pocket with access port plus mobile phone pouch.



**Alberta Ripper Wallet**  
LRO 2090

Suitable for all currency and credit cards.

**Alberta Sport Duffie**  
LRO 2086  
60cm

A great small kit bag, light weight and made from ripstop material.



**Alberta Boot Bag**  
LRO 2091

Keep those muddy boots in their own bag. Dual zip for easy access.



**High Trail Flask**  
LRO 2050  
1.2L  
Stainless steel flask.



**Sassafras Hiking Stick**  
LRO 1966  
Approx 137cm in height  
This beautiful and sturdy walking staff is hand crafted from Sassafras a deciduous tree found in south eastern USA. It is a product of fire mitigation and forest management and each staff is selected on strength and good looks. After being kiln dried they are hand worked before being given a distinctive spiral cut before being finished with a long-life rubber boot and a handsome embossed leather wrist strap. This product will give you a lifetime of support and is a great heirloom for your grand children.



**Karabiner Key Chain**  
LRO 0754  
Karabiner style keyring made from aluminium alloy.



**Dynamo 5-LED Light & Radio**  
LRO 1860  
This torch and radio features 3 or 5 LED 180° swivel lighting, magnetic base for secure attachment to metal, FM radio and is fitted with rechargeable NIMH batteries that never need replacing. It can be powered by its own wind-up generator or charged from a car 12v cigarette lighter socket. A cell phone charger adaptor is also included in the kit.



**Sotol Hiking Stick**  
LRO 1965  
Approx 137cm in height  
Hand crafted from the flower stalk of the 'Desert Candle' this stick is amazingly light weight yet very durable. The Sotol blooms once per year and when Mother Nature has finished with the stalk it is harvested and worked by hand and finished with a rubber tip. Please note as a result no two sticks are identical and most have a natural bow to them.



**Fairbanks Chair**  
LRO 2052  
Light weight aluminium chair with padded seat and back rest, ideal for picnics by the sea or on safari in Africa.

### Trek Belt

LRO 2244

Whether walking in town or country you still need a few essentials kept safe and secure. The Land Rover Trek belt has a zippered and expandable stuff pouch and stretch pockets plus drinks bottle. The belt is fully adjustable for size.



### Watershed Dry Bag

LRO 2115

54L

If you spend lots of time in or on the water but need your gear to stay dry this is the bag for you. This bag is made using a fabric that will stand years of abrasion, UV exposure and extremes in temperature and accidental exposure to fuel and chemicals. It is an airtight submersible bag designed to Go Beyond.





**Utah Travel Blanket**

LRO 2268

1.5m x 2.0m

This snug wrap is made from the finest ultra soft material – Nubay Plush. It is 100% machine washable and is a keepsake for years to come. It can be cosy for two or used as a warm individual wrap. Perfect for late nights watching a sunset. Printed with an exclusive design it says it all 'It's a Land Rover World'.



**Travel Hammock**

LRO 2251 – Steel and Orange

The Land Rover Travel Hammock packs away in its own bag and takes up about the same space as a soft ball. This allows backpackers the luxury of hammock camping without bulk and weight. Supporting 180 kgs it is great for recreational use as well as adventure hunters. The hammock comes complete with tree or vehicle straps for secure fixing. On the beach or in the garden this is made for Summer.

**Moab Fly Sheet**

LRO 2363

Approx 3 mts x 2mts

This ripstop nylon tarp will keep you dry and offer shade and can be used in conjunction with our Travel Hammock for overland treks. Weighing in at less than 650 gms it is ideal for back packing. It offers a large rain coverage area for dry storage and comes complete with six point guy lines (ground pegs not included). It can be attached to any sturdy structure such as a tree or vehicle. It comes in its own compression sack. It is printed with the Land Rover Oval and Original Equipment.





**Land Rover Scrap Book**  
LRO 1999

Pick this book up and open on any page and you will find an anecdote or story to capture your imagination. This is a journey through the history of Land Rover looking at the people, places and events that have shaped this world famous marque. It is bulging with pictures and extraordinary stories that will interest not only the die-hard enthusiast, but anyone interested in the social history of Great Britain's manufacturing from the late 1940's to the present day. This book, written by Mike Gould, is a fitting tribute to 60 years of The Best 4x4Far.

**Ski Bear**  
LRO 2200

This bear cannot wait for the first snow. He is packed and ready for the Alps.



Minimum age 36 months.  
All Land Rover soft toys are made to CE BS (British standards 5665) and EN71 standards.



**Survival Playing Cards**  
LRO 1962

Traditional playing cards that just might help save a life. Each card is printed with a survival tip that will hopefully increase your knowledge to meet most disaster scenarios. Not just First Aid treatment, but also building shelters and locating your position. A great gift for all outdoor enthusiasts.

**Orang-utan**  
LRO 1986

Who can resist this appealing character? Land Rover are official sponsors of Borneo Orang-utan Survival. Please visit their website to see their fantastic work - [www.savetheorangutan.org](http://www.savetheorangutan.org). We will donate £3 direct to the charity for every Orang-utan we sell.



**Safari Bear**  
LRO 1075

A bear destined for an African safari.





**Explorer Water Bottle**  
LRO 2049 – Brown  
1L  
Traditional shape water bottle with rugged pig skin hide covering.



**Dictionary Mug**  
LRO 2295  
330ml  
Black mug with Land Rover definition on both sides.



**Water Bottle**  
LRO 1693  
1L  
Aluminium water bottle with screw top and karabiner fastening.



**Go Beyond Mug**  
LRO 1754  
300ml  
Porcelain mug.



**3D Mug**  
LRO 2296  
330ml  
Deep imprint mug with Trade Mark oval and Go Beyond.



**Montana Jacket**

JKT 0537 – Navy  
XS S M L XL XXL

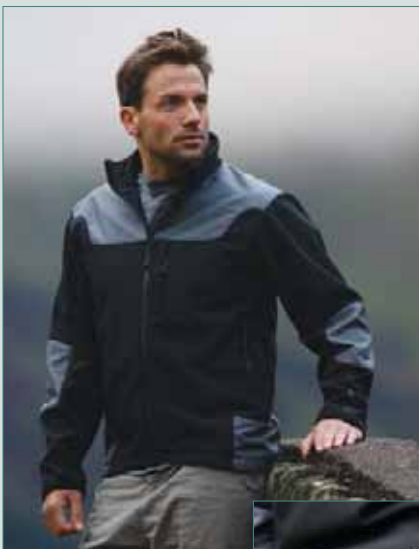
Fleece lined jacket with two front zip pockets and a zipped internal pocket.



**East Coast Jacket**

JKT 2113 – Brown  
S M L XL XXL

One of our best selling casual jackets. This classic urban jacket is made in a soft cotton fabric with nano-technology treatment which gives the fabric a long-lasting water repellent and stain resistant finish.



**Snowbird Jacket**

JKT 2014 – Black  
S M L XL XXL

This is a versatile contemporary jacket in soft shell construction. It has high stretch flexibility for comfort plus a climate control feature that allows moisture wicking and water resistance whilst retaining body heat.





**Snow Explorer Jacket**

JKT 2017 – Stone

S M L XL XXL

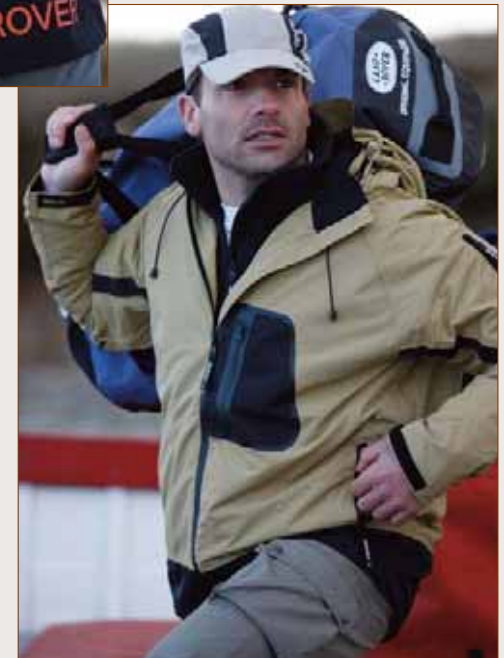
As the name suggests this is an all round outer layer jacket. It features a removable and adjustable snow skirt and an elasticated Ski cuff that can be worn in two ways to help retain hand temperature. It is fully waterproof with taped seams but also has under arm zip vents for the most energetic. Front and pocket zips are all made in water resistant construction.

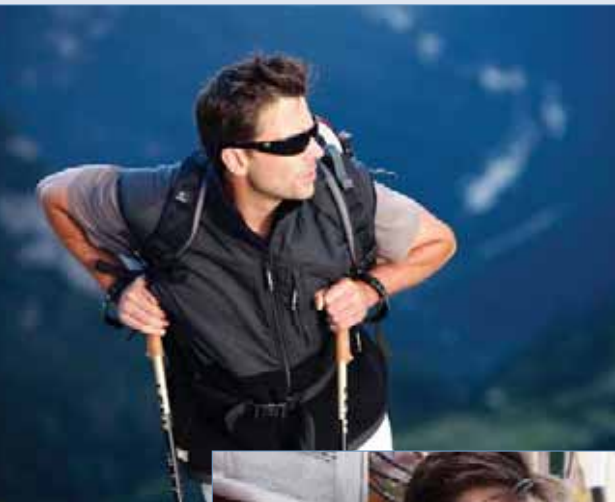
**Summit Jacket**

JKT 2382 – Black

S M L XL XXL

Light weight quilted jacket, 70% Down, 30% Feather. This garment provides great warmth and can be compressed for easy stowage. At home in the city or the mountain.





**High Sierra Fleece**

FLC 2386 – Black

S M L XL XXL

Heavy weight fleece jacket with fabric panels and print motif on shoulder.

**Base Camp Vest**

FLC 2387 – Black

S M L XL XXL

Matching partner to the High Sierra Fleece but in a versatile vest design. This is a great all seasons garment and can be worn under rain jackets or by itself.





**Newfoundland Jacket**

JKT 2308 – Charcoal

S M L XL

Zip fronted Merino sheepskin jacket hand crafted in Britain. Contemporary styling in a durable but soft material that will just get better year after year.



**Pack Of 3 Socks**

SOX 0593 – Navy, Green, Black

Size 7-11

Cushion foot sports socks.



**Utah Belt**

BLT 2234 – Black

M L XL

Black webbing belt with bottle opening buckle design.



**Jura Sweat**  
FLC 2384 – Grey  
S M L XL XXL  
Hooded sweat with print  
design on front and back.



**Tay Sweat**  
FLC 2400 – Navy  
S M L XL XXL  
Full zip sweat with  
distressed print motif  
on front.



**Highland Fleece**

FLC 2020 – Black  
S M L XL XXL

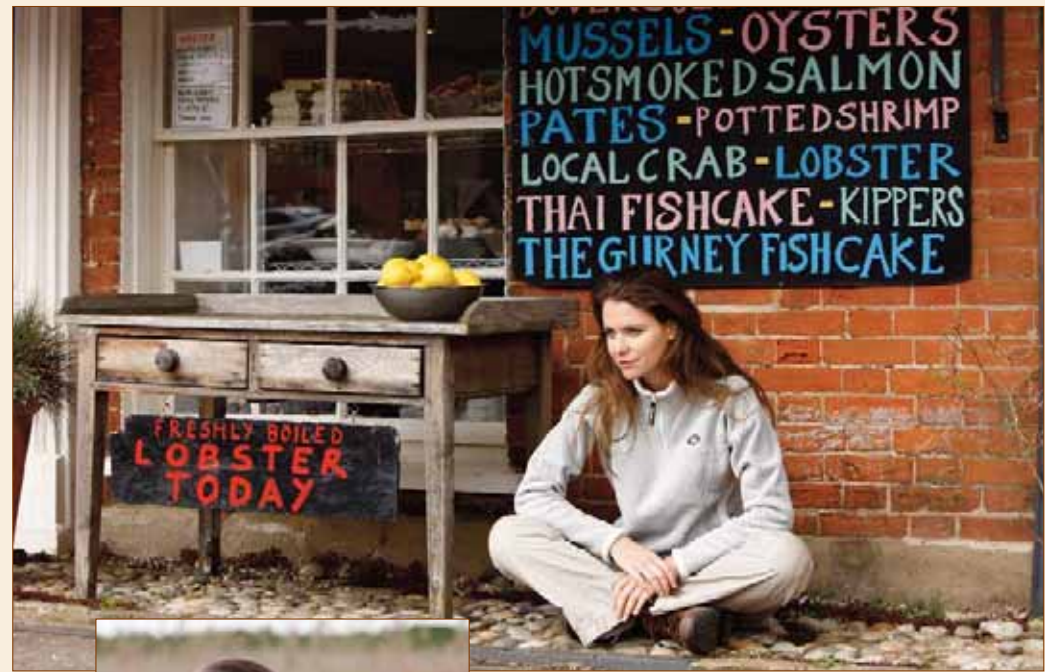
High performance Polartec® fleece including stretch panels for improved fit and articulation. Seat and hip panel makes this extremely comfortable when driving. Including exterior phone or wallet pocket.



**Mistral Fleece**

FLC 0707 – Black  
XS S M L XL

Half zip, lightweight double-faced fleece. A great mid-layer garment.



**Lodge Sweat**

FLC 1902 – Navy  
S M L XL XXL

Hooded sweat with sleeve design and silicone arm badge.



**Whitehaven Fleece**

FLC 2102 – Grey  
S M L XL

Double faced Ladies' half zip fleece with embroidery on back neck.

**Canyon Watch**

LRO 1862

40mm bezel

Boxed set comprising of Titanium cased robust Field Watch and two interchangeable straps (Black and Sand). This watch has a back light feature for night time use.





**Fusion Skarfr**

HTS 2035

One Size

Wear as a neckerchief, hat or a myriad of other styles of head wear with Land Rover oval design.



**Tracker Sweat**

FLC 2013 – Grey

S M L XL XXL

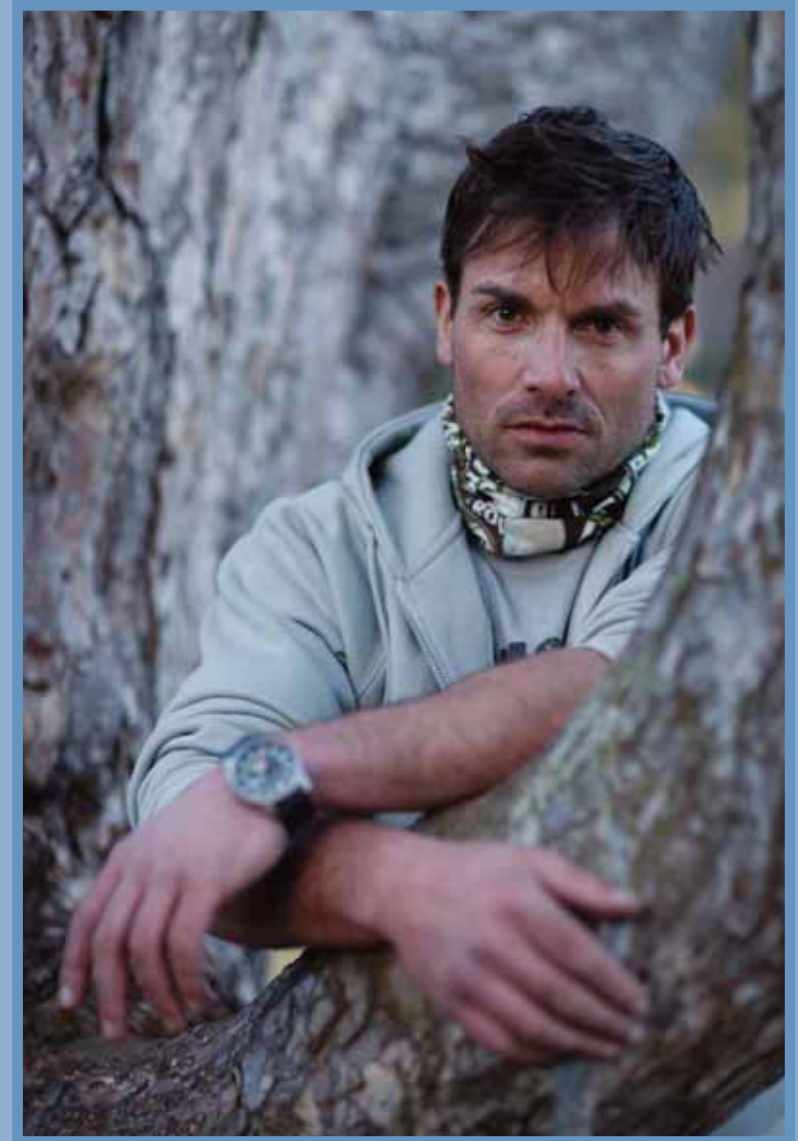
Hooded sweat with silicone print design on back and front.

**World Adventure Skarfr**

HTS 2036

One Size

Versatile headwear with adventure design.





**Expedition Shirt**

SRT 2217 – Rust, Khaki, Blue  
S M L XL XXL

This stalwart of the Gear range has now been updated in ripstop cotton for extra durability. It has removable sleeves for use across many climates.

**Trek Shirt**

SRT 2023 – White  
S M L XL XXL

Our famous Trek shirt is now produced in white cotton but still with super wicking treatment moisture movement and comfort. It has tab sleeves and two large pockets.

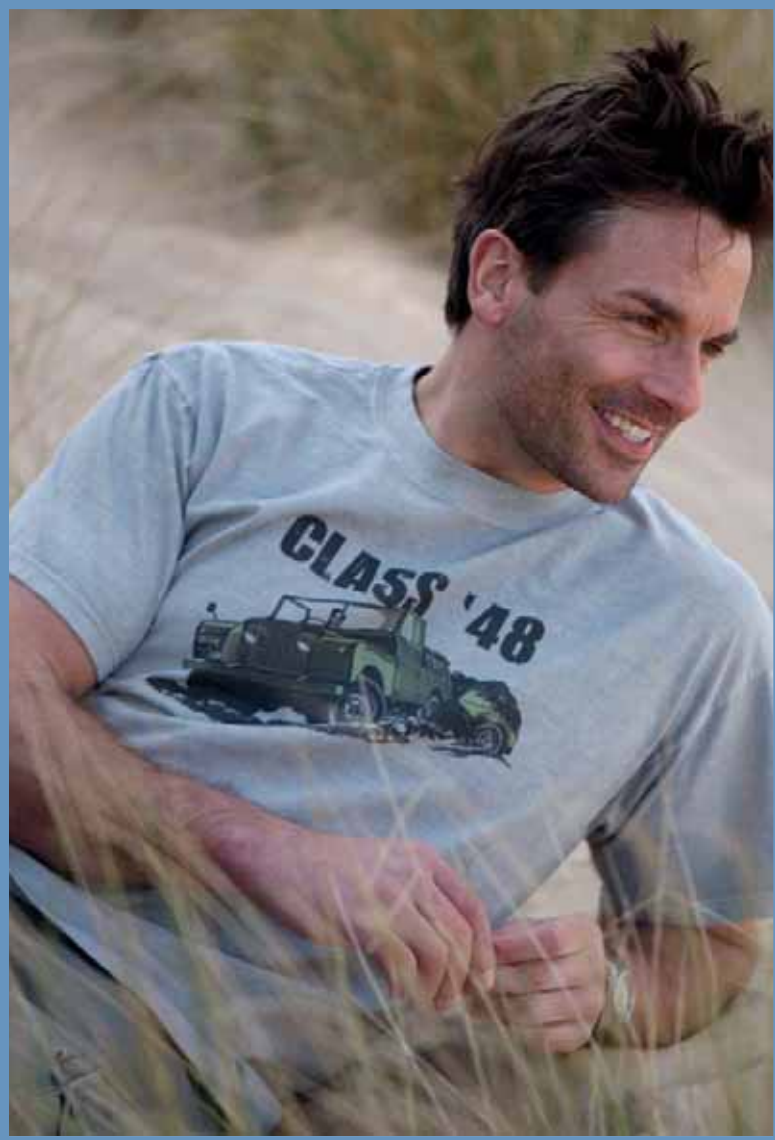


**Classic Men's Polo Shirt**

TSH 0082 – Navy, Black, Forest  
XS S M L XL XXL

Made from heavyweight 100% cotton pique.





**Class of 48 T-Shirt**

TSH 2360 – Silt  
 S M L XL XXL  
 Tubular knit soft cotton  
 T-shirt with print motif.  
 Organic cotton and clay dye.

**First Class T-Shirt**

TSH 2373 – White  
 S M L XL XXL  
 100% Cotton T-shirt  
 with print design.

**Passion T-Shirt**

TSH 2380 – Black  
 S M L XL XXL  
 100% Cotton T-shirt  
 with print design for  
 Land Rover militants.



**Whistler Watch**

LRO 2227  
 Matte finish titanium case with  
 water resistance to 100m, this  
 watch has a mineral scratch  
 resistant glass and high  
 contrast easy to read dial. It  
 also features an ergonomically  
 offset screw down crown and  
 long life battery.



**Aspen Watch**

LRO 2228  
 Ladies' watch in a brushed stainless  
 steel case. It has water resistance  
 to 100m and an easy to read dial  
 behind scratch resistant mineral  
 glass. The ergonomically offset  
 screw down crown gives extra  
 comfort in wear especially for those  
 with an active outdoor lifestyle.



**Crew 48 Polo**  
TSH 2376 – Navy  
S M L XL XXL

Cotton pique polo with print design Expedition Team on front and Crew 48 on back.

**Crew 48 Ladies Polo**  
TSH 2404 – Navy  
S M L

Cotton pique polo with print design Expedition Team on front and Crew 48 on back.



**World Map T-Shirt**  
TSH 2375 – Navy  
S M L XL XXL  
100% Cotton T-shirt with print design.



**Aspen T-Shirt**  
TSH 2195 – Sand  
S M L XL XXL

Long Sleeve tubular knit soft cotton T-shirt with ski print motif. Organic cotton and clay dye.

**Nevada Belt**  
BLT 2362 – Brown  
M L XL

Native weave webbing belt with bottle opening buckle design.





**Heart T-Shirt**

TSH 2379 – White

S M L

Ladies T-shirt for all Land Rover lovers.

**So Many Roads T-Shirt**

TSH 2361 – Mud

S M L XL XXL

Tubular knit soft cotton T-shirt with print motif. Organic cotton and clay dye.



**Expedition Polo**

TSH 2372 – Navy

S M L XL XXL

Cotton pique polo with print design depicting famous Land Rover Expeditions.



**Art T-Shirt**

TSH 2381 – Black

S M L XL XXL

Land Rovers as art in print design – 100% cotton.





**Classic Cap**

HTS 0589 – Green

One Size

Cotton twill cap with an adjustable strap for comfort.



**Go Beyond Peak Cap**

HTS 1615 – Navy

One Size

Polyester cap with Go Beyond in rubber on the peak.

**Mohawk Cap**

HTS 2356 – Stone

One Size

Light weight hot climate cap.



**Drive High Cap**

HTS 2072 – Blue

One Size

Printed Rugby cap.



**Pathfinder Cap**  
HTS 2073 – Green  
One Size  
Stone washed adventure cap.



**Bush Hat**  
HTS 0576 – Brown  
S M L XL XXL  
Waterproof leather  
trekking hat.





**Tundra Hat**

HTS 2317 - Brown

One size

Designed for the coldest of weather with ear flaps that can be worn up or down.



**Ice Hat**

HTS 1921 - Black

One size

A hat for the coldest of days with thermal lining.



**Slip Collar**  
LRO 2229  
Adjustable collar for all medium to large size dogs.

**Lead**  
LRO 2230  
Long heavy duty dog lead.



**Bison Dog Bowl**  
LRO 2231  
1L  
Foldable dog bowl for food or water.



**Umbrella**  
LRO 1753  
Canopy 130cm  
Golf umbrella with fibre glass shaft and ribs.



**Emergency Seat Cover**  
LRO 1743  
Seat protection in waterproof black nylon (sold individually). Fits most front seats.

**Pair of Dog Tags**  
LRO 1621  
Diameter 3cm  
Circular metal dog tags with full colour Land Rover logo; suitable for engraving on the reverse.



**Travel Mug**  
LRO 2278  
455ml  
Stainless steel travel mug.



**Parking Sign**  
LRO 1355  
A3

Heavy duty metal sign, a must for all Land Rover owners. Reserve your own parking space.



**Defender 90 with Canopy**  
LRO 1731  
1:32 Scale.



**All New Discovery 3**  
LRO 0406  
1:32 Scale.



**Fording the Stream**  
LRO 1162  
Experience pewter diorama.



**Rocks Pewter Model**  
LRO 2397  
Beautifully hand crafted pewter diorama of a Discovery Adventure.



**Bottle Opener**  
LRO 1517  
With laser etched logo.

**Eco-Lanyard**  
LRO 2033  
Ideal for your conference or ski pass, stand out from the crowd. Now earth friendly and sustainable, made using organic inks and plant material.



**Beyond Fashion Mug**  
LRO 1768  
473ml  
Large ceramic mug.

**Rope Logo Key Ring**  
LRO 2054



**Clip Pack**  
LRO 1877  
This multi use mini pack can be used to stow sunglasses, MP3 player, keys etc when out walking or travelling. Made in soft shock-proof material with zip fastening, it clips directly on to your belt or day pack.



**Go Beyond Leather Back Key Fob**  
LRO 2071

**Logo Badge**  
LRO 0008  
1.5cm long  
Small pin badge of the famous logo.

**Lanyard Key Chain**  
LRO 1685  
A key chain made from webbing, with a silicone Land Rover badge on one side and Go Beyond badge on the reverse.





### Experience Explorer Case

LRO 2398  
 Ext Dims 546 x 347 x 247mm  
 Int Dims 517 x 277 x 217mm  
 Weight 6.00Kg  
 Volume 31L

This almost indestructible waterproof and dustproof case is manufactured in Europe to the most exacting standards. It offers a perfect solution for any equipment requiring a high level of protection such as cameras or computers. The wheeled holdall is built to Defence standards and meets demands from the harshest environments on the planet.



### Sizes

Men's chest			
Size	UK	Euro I	Euro II
XS	34"	44cm	88cm
S	36"-38"	48cm	96cm
M	40"	50cm	100cm
L	42"	52cm	104cm
XL	44"	56cm	112cm
XXL	46"-48"	58cm-60cm	118cm

Men's Waist		
Size	Inches	Centimetres
S	28"-32"	71cm - 82cm
M	32"-36"	82cm - 92cm
L	36"-40"	92cm - 102cm
XL	41"-45"	104cm - 114cm
XXL	46"-48"	117cm - 122cm

Men's Hat	
UK	EU
S	55cm
M	57cm
L	59cm
XL	61cm
XXL	63cm

Ladies' Chest		
Size	UK	Centimetres
S	10 - 12	68cm - 72cm
M	14 - 16	76cm - 80cm
L	16 - 18	84cm - 88cm

Please note that not all Land Rover Gear products are available in all markets. We reserve the right to alter and improve items.

For Retail Customer enquiries please contact your local Dealer. Their number can be found by visiting [www.landrover.com](http://www.landrover.com)

For Trade enquiries only please - contact Land Rover Gear on:

T: +44 (0)870 777 2779

[help@landrovergear.info](mailto:help@landrovergear.info)